

# Barracuda NextGen Firewall F

Scalable Security for the Enterprise



Enterprise networks grow larger and more complex every day - and more critical to key business operations. The Barracuda NextGen Firewall F-Series is an essential tool to **optimize the performance, security, and availability of today's dispersed enterprise WANs.**

- ✓ Security
- Storage
- Application Delivery
- Productivity

## The Barracuda Advantage

### Effective WAN Management

- Application-based traffic prioritization across the WAN
- Intelligent uplink balancing
- Intelligent traffic re-prioritization on uplink loss

### Enterprise Readiness

- Industry-leading centralized management
- WAN optimization
- Global WAN monitoring with Barracuda Earth

### Scalable Security

- Cloud Enablement and secure WAN Virtualization
- Drag-and-drop VPN graphical tunnel interface

## Product Spotlight

- Powerful next-generation network firewall
- Advanced Threat Detection
- Built-in web security and IDS/IPS
- Dynamic mesh site-to-site VPN
- Client-to-Site VPN via browser (SSL VPN), mobile apps and desktop VPN clients
- Full application visibility and granular control
- Intelligent traffic regulation including application-based provider selection
- Tightly integrated Quality of Service (QoS) and link balancing
- Centralized management of all functionality
- Template-based and role-based configuration



## Integrated Next-Generation Security

The Barracuda NextGen Firewall F-Series is designed and built from the ground up to provide comprehensive, next-generation firewall capabilities. Cloud-hosted content filtering and reporting offload compute-intensive tasks to the cloud for greater resource efficiency and throughput. Based on application visibility, user-identity awareness, intrusion prevention, and centralized management, F-Series is the ideal solution for today's dynamic enterprises.



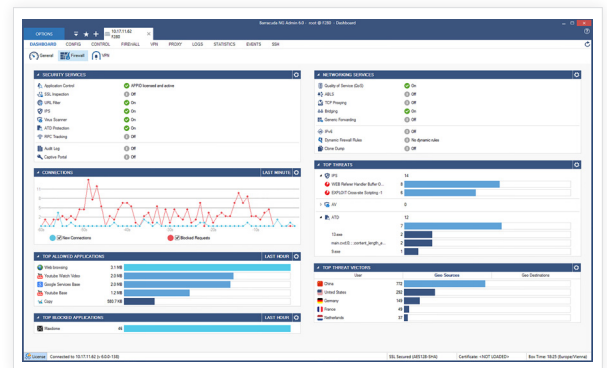
## True Enterprise Readiness

The Barracuda NextGen Firewall F-Series meets the enterprise requirements for massive scalability and efficient management across distributed networks. Integrated WAN optimization and dedicated centralized management appliances enable organizations to increase system availability while keeping administrative time and operation costs low.



## Regaining Control of User Activity

The Barracuda NextGen Firewall F-Series restores control to networks made opaque and unmanageable by mobile devices at work, Web 2.0 applications, increasing dispersion, and the growing integration and dependence on cloud-based resources. It extends security coverage beyond network boundaries, and makes it easy to monitor and regulate everything the network and its users are doing.



The Barracuda NextGen Firewall F-Series' dashboard provides real-time information and summaries of what is going on in an organization's network.

Recently I tried one of these dedicated products to protect of advanced persistent threats. After one month of extensive monitoring it turned out that our Barracuda NextGen Firewall F protects our infrastructures so well, that we can continue to focus on actual business problems. Having chosen the right firewall still saves us money and time every day.

Chief Information Officer  
Union of Turkish Bar Associations

## Technical Specs

### Firewall

- Stateful packet inspection and forwarding
- Full user-identity awareness
- Intrusion Detection and Prevention System (IDS/IPS)
- Application control and granular application enforcement
- Interception and decryption of SSL/TLS encrypted applications
- Antivirus and web filtering in single pass mode
- SafeSearch enforcement
- YouTube for Schools support
- Denial of Service protection (DoS/DDoS)
- Spoofing and flooding protection
- ARP spoofing and trashing protection
- DNS reputation filtering
- TCP stream reassembly
- Transparent proxying (TCP)
- NAT (SNAT, DNAT), PAT
- Dynamic rules / timer triggers
- Single object-oriented rule set for routing, bridging, and routed bridging
- Virtual rule test environment

### User Identity Awareness

- Terminal Server Agent
- Domain Controller Agent
- Authentication – supports x.509, NTLM, RADIUS, RSA SecurID, LDAP/LDAPS, Active Directory, TACACS+, SMS Passcode (VPN), local authentication database
- WiFi Access Point Authentication support

### Intrusion Detection and Prevention

- Protection against exploits, threats and vulnerabilities
- Packet anomaly and fragmentation protection
- Advanced anti-evasion and obfuscation techniques
- Automatic signature updates

### Traffic Optimization

- Link monitoring, aggregation, and failover
- Dynamic routing
- Application-based provider selection
- Traffic shaping and QoS
- On-the-fly flow reprioritization
- Stream and packet compression
- Byte-level data deduplication
- Protocol optimization (SMBv2)

### Advanced Threat Detection

- Dynamic, on-demand analysis of malware programs (sandboxing)
- Dynamic analysis of documents with embedded exploits (PDF, Office, etc.)
- Detailed forensics for both, malware binaries and web threats (exploits)
- Support for multiple operating systems (Windows, Android, etc.)
- Flexible malware analysis in the cloud

### VPN

- Drag & drop VPN tunnel configuration
- Secure site-to-site, client-to-site VPN
- Dynamic mesh site-to-site VPN
- Supports AES-128/256, 3DES, DES, Blowfish, CAST, null ciphers
- Private CA or external PKI
- VPNC certified (basic interoperability)
- Application-aware traffic routing
- IPsec VPN / SSL VPN / TINA VPN/ L2TP / PPTP
- Network Access Control
- iOS and Android mobile device VPN support

### High Availability

- Active-active (requires external load balancer) or active-passive
- Transparent failover without session loss
- Network notification of failover
- Encrypted HA communication

### Central Management Options

- Barracuda NextGen Control Center
  - Unlimited firewalls
  - Support for multi-tenancy
  - Multi-administrator support & RCS

### Infrastructure Services

- DHCP server, relay
- SIP, HTTP, SSH, FTP proxies
- SNMP and IPFIX support
- DNS Cache
- SMTP gateway and SPAM filter
- Wi-Fi (802.11n) access point on selected models

### Protocol Support

- IPv4, IPv6
- BGP/OSPF/RIP
- VoIP (H.323, SIP, SCCP [skinny])
- RPC protocols (ONC-RPC, DCE-RPC)
- 802.1q VLAN

## Support Options

### Barracuda Energize Updates

- Standard technical support
- Firmware updates
- IPS signature updates
- Application control definition updates
- Web filter updates

### Instant Replacement Service

- Replacement unit shipped next business day
- 24/7 technical support
- Free hardware refresh every four years

## Security Options

- Advanced Threat Detection
- NextGen Web Filter
- Malware Protection
- Basic Remote Access subscription provides browser-based remote access (SSL VPN) with Network Access Control (NAC)

- Premium Remote Access subscription provides remote access via the CudaLaunch App for iOS and Android devices

MODEL COMPARISON	F10	F18	F80	F180	F280	F380	F400 SUBMODELS		F600 SUBMODELS			F800 SUBMODELS			F900 SUBMODELS			F1000 SUBMODELS		
							STD	F20	C10 C20	F10 F20	E20	CCC	CCF	CCE	CCC	CCE	CFE	CCC	CCE	CFE
<b>CAPACITY</b>																				
Firewall Throughput <sup>1</sup>	300 Mbps	1.0 Gbps	1.35 Gbps	1.65 Gbps	3.0 Gbps	3.8 Gbps	5.5 Gbps	16.3 Gbps <sup>5</sup>			19.6 Gbps <sup>5</sup>			22.2 Gbps <sup>5</sup>			40 Gbps <sup>5</sup>			
VPN Throughput <sup>2</sup>	85 Mbps	190 Mbps	240 Mbps	300 Mbps	1.0 Gbps	1.2 Gbps	1.2 Gbps	2.3 Gbps <sup>5</sup>			7.3 Gbps <sup>5</sup>			7.8 Gbps <sup>5</sup>			10 Gbps <sup>5</sup>			
IPS Throughput <sup>1</sup>	60 Mbps	400 Mbps	500 Mbps	600 Mbps	1.0 Gbps	1.4 Gbps	2.0 Gbps	5.0 Gbps <sup>5</sup>			6.5 Gbps <sup>5</sup>			7.1 Gbps <sup>5</sup>			13 Gbps <sup>5</sup>			
Concurrent Sessions	2,000	80,000	80,000	100,000	140,000	250,000	370,000	2,100,000 <sup>5</sup>			2,500,000 <sup>5</sup>			2,800,000 <sup>5</sup>			10,000,000 <sup>5</sup>			
New Session/s	1,000	8,000	8,000	9,000	10,000	15,000	20,000	115,000 <sup>5</sup>			150,000 <sup>5</sup>			160,000 <sup>5</sup>			250,000 <sup>5</sup>			
<b>HARDWARE</b>																				
Form Factor	Desktop mini		Desktop				1U rack mount						2U rack mount							
1 GbE Copper Ethernet NICs	4x	4x	4x	6x	6x	8x	8x	8x	12x	8x	8x	20x	12x	12x	24x	16x	8x	16x	32x	16x
1 GbE Fiber NICs (SFP)									4x	4x		4x					8x			16x
10 GbE Fiber NICs (SFP+)											2x		4x			4x	x4	4x	8x	8x
Integrated Switch				8-port	8-port															
Wi-Fi Access Point			•	•	•															
Power Supply		Single (ext.)				Single	Dual <sup>6</sup>	Single <sup>7</sup>								Dual <sup>6</sup>				
<b>FEATURES</b>																				
Firewall	•	•	•	•	•	•	•	•	•	•	•	•	•	•	•	•	•	•	•	•
Application Control <sup>3</sup>	•	•	•	•	•	•	•	•	•	•	•	•	•	•	•	•	•	•	•	•
IPS <sup>3</sup>	•	•	•	•	•	•	•	•	•	•	•	•	•	•	•	•	•	•	•	•
Dynamic Routing	•	•	•	•	•	•	•	•	•	•	•	•	•	•	•	•	•	•	•	•
App-based Provider Selection	•	•	•	•	•	•	•	•	•	•	•	•	•	•	•	•	•	•	•	•
VPN	•	•	•	•	•	•	•	•	•	•	•	•	•	•	•	•	•	•	•	•
SSL Interception		•	•	•	•	•	•	•	•	•	•	•	•	•	•	•	•	•	•	•
WAN Optimization		•	•	•	•	•	•	•	•	•	•	•	•	•	•	•	•	•	•	•
Spam Filter		•	•	•	•	•	•	•	•	•	•	•	•	•	•	•	•	•	•	•
Web Filter		•	•	•	•	•	•	•	•	•	•	•	•	•	•	•	•	•	•	•
NextGen Web Filter		Optional	Optional	Optional	Optional	Optional	Optional	Optional	Optional	Optional	Optional	Optional	Optional	Optional	Optional	Optional	Optional	Optional	Optional	Optional
Malware Protection		Optional	Optional	Optional	Optional	Optional	Optional	Optional	Optional	Optional	Optional	Optional	Optional	Optional	Optional	Optional	Optional	Optional	Optional	Optional
Advanced Threat Detection <sup>4</sup>		Optional	Optional	Optional	Optional	Optional	Optional	Optional	Optional	Optional	Optional	Optional	Optional	Optional	Optional	Optional	Optional	Optional	Optional	Optional
Basic Remote Access				Optional	Optional	Optional	Optional	Optional	Optional	Optional	Optional	Optional	Optional	Optional	Optional	Optional	Optional	Optional	Optional	Optional
Premium Remote Access <sup>8</sup>				Optional	Optional	Optional	Optional	Optional	Optional	Optional	Optional	Optional	Optional	Optional	Optional	Optional	Optional	Optional	Optional	Optional

<sup>1</sup> Measured with large packets (MTU1500) <sup>2</sup> VPN throughput using AES128 NOHASH <sup>3</sup> Requires Energize Updates subscription. <sup>4</sup> Requires Malware Protection subscription. <sup>5</sup> Measured with 10GbE fiber ports  
<sup>6</sup> Internal dual hot swap power supply <sup>7</sup> Internal dual hot swap power supply optional. <sup>8</sup> Requires Basic Remote Access subscription. Specifications subject to change without notice.